



Medium Chess Puzzle # 0120

By

G Bud Games
<https://gbud.in>

January 28, 2022

Contents

Medium Chess puzzle # 0120 - Gain opponent's queen	3
Medium chess puzzle 0120	3
Solution to medium chess puzzle 0120	4
Solution 1	4
Right moves for the solution to the medium chess puzzle 0120	7
Explanation for the moves	7
Categories of medium chess puzzle 0120	8
medium chess puzzle 0120 chart	9
How to view the solution to medium chess puzzle 0120	11
How to get help for moves in the medium chess puzzle 0120 . .	12
Play chess for free	13

List of Figures

1	Solve this medium chess puzzle 0120. Gain opponent's queen @ https://gbud.in/g4f4yr2	3
2	Solve this medium chess puzzle online with solution @ https://gbud.in/g4f4yr2	3
3	Initial board position of medium chess puzzle 0120	4
4	Rd8	5
5	Qxd8	5
6	Rd1+	6
7	Kc3	6
8	Rxd8	7
9	medium chess puzzle 120 chart 1	9
10	medium chess puzzle 120 chart 2	10
11	medium chess puzzle 120 chart 3	10
12	medium chess puzzle 120 chart 4	11
13	Click the solution button to view solutions @ https://gbud.in/g4f4yr2	11
14	Click the help button to get help on next move @ https://gbud.in/g4f4yr2	12
15	Solve more medium puzzles @ https://gbud.in/chsmdpz	12
16	Solve other puzzles @ https://gbud.in/chsgppz	12
17	Play chess online for free. Solve puzzles and play with friends	13
18	Solve this puzzle online by scanning this QR code or go to the link below	14

Medium Chess puzzle # 0120 - Gain opponent's queen

Solve this medium chess puzzle and improve your chess games through improvement of your chess strategies and chess tactics.

Puzzle No : 0120

Difficulty level : medium

Description : Gain opponent's queen

Next Move : White

Player level : Intermediate

Short URL for puzzle : <https://gbud.in/g4f4yr2>

Medium chess puzzle 0120

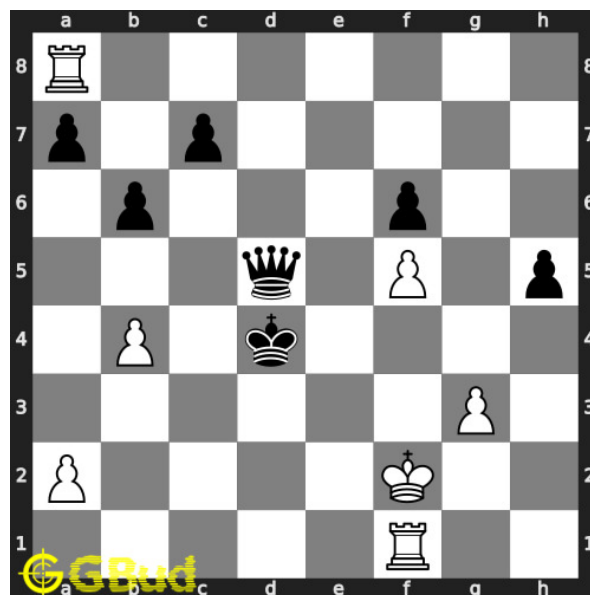


Figure 1: Solve this medium chess puzzle 0120. Gain opponent's queen @ <https://gbud.in/g4f4yr2>



Figure 2: Solve this medium chess puzzle online with solution @ <https://gbud.in/g4f4yr2>

Dont forget to check out [chess puzzles](#), [easy chess puzzles](#), [medium chess puzzles](#), [hard chess puzzles](#) and [chess puzzles collections](#) .

Solution to medium chess puzzle 0120

At this puzzle, next [move](#) is by [White](#). The objective of the puzzle is to gain opponent's queen.

See the interactive solution at the [puzzle page](#)

Solution 1

Initial board position This is the initial board position of medium chess puzzle 0120.

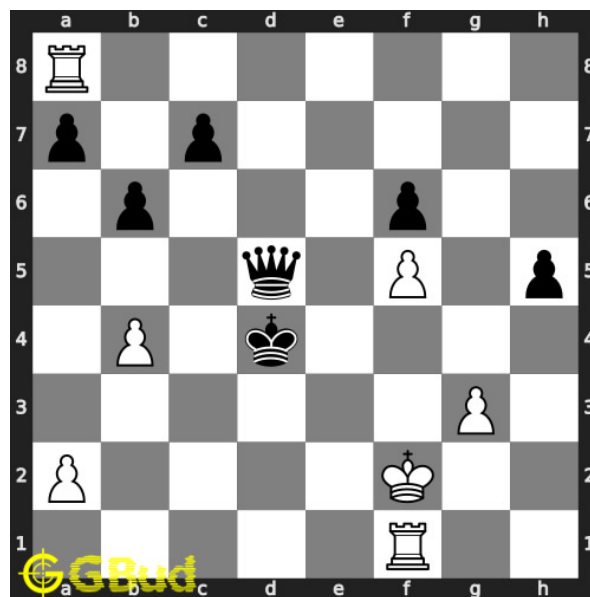


Figure 3: Initial board position of medium chess puzzle 0120

Move 1 Move by white

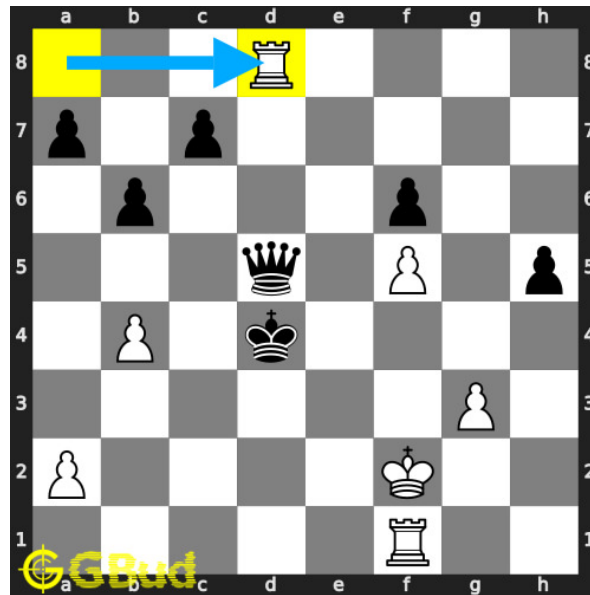


Figure 4: Rd8

your rook sacrifices itself and pins the opponent's queen to their king. opponent's queen can't move out of d file since it exposes their king to a check.

Move 2 Move by black

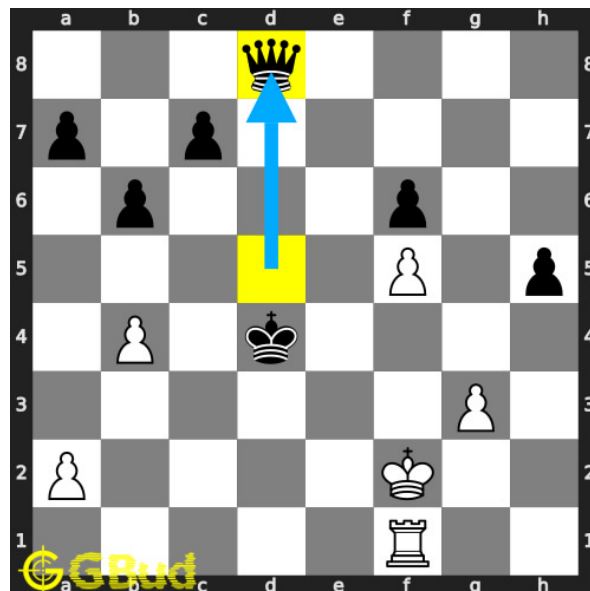


Figure 5: Qxd8

this is a desperado move since the opponent want's to have a maximum loss to you before losing their queen which will be lost any way since it is pinned.

Move 3 Move by white

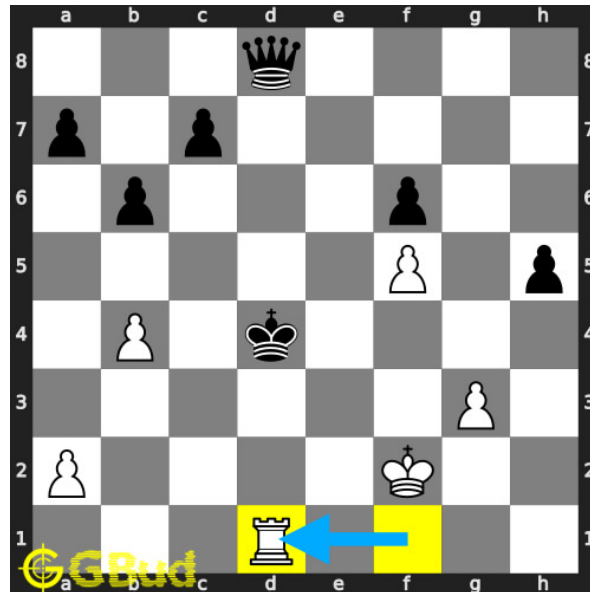


Figure 6: Rd1+

by the **check** your **rook** has a x-ray attack on opponent's **queen**.

Move 4 Move by black

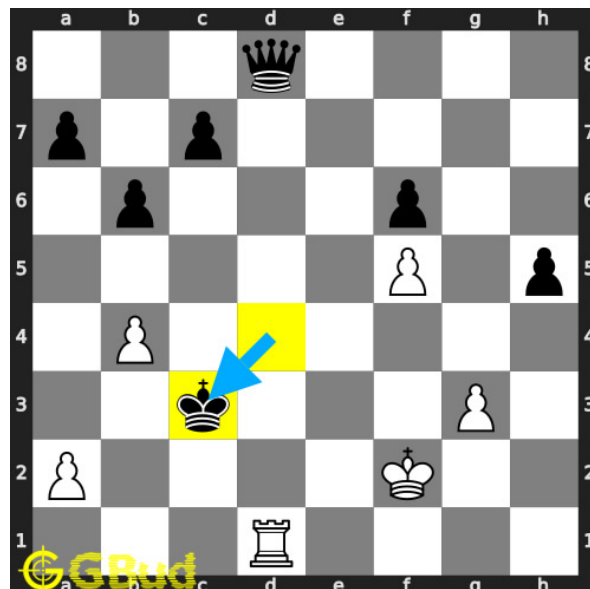


Figure 7: Kc3

opponent's **king** escapes from the **check** threat by moving to **c3**.

Move 5 Move by white

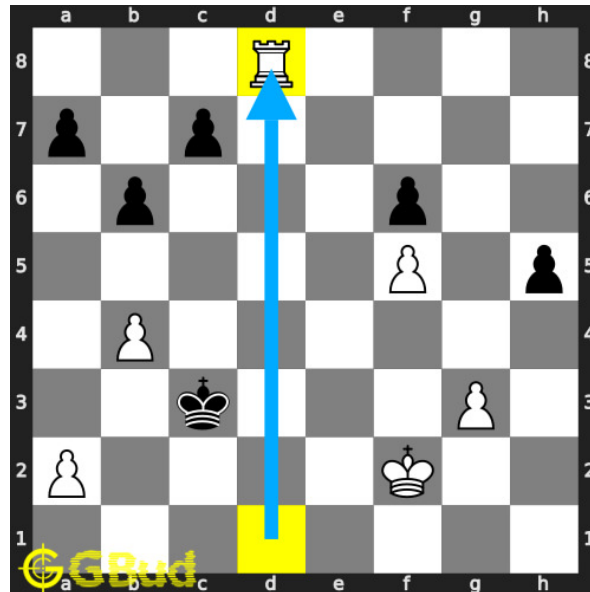


Figure 8: Rxd8

your **rook captures** opponents hanging **queen**. this is a skewer attack. this is how you can gain opponent's **queen**.

Right moves for the solution to the medium chess puzzle 0120

Based on the objective of the puzzle, you have to make the right moves. Following are the right moves

1. Rd8, Rd1+, Rxd8

Explanation for the moves

1. Rd8 - Your rook sacrifices itself and pins the opponent's queen to their king. Opponent's queen can't move out of d file since it exposes their king to a check.
2. Rxd8 - Your rook captures opponents hanging queen. This is a skewer attack. This is how you can gain opponent's queen.
3. Qxd8 - This is a desperado move since the opponent wants to have a maximum loss to you before losing their queen which will be lost any way since it is pinned.
4. Rd1+ - By the check your rook has a x-ray attack on opponent's queen.

5. Kc3 - Opponent's king escapes from the check threat by moving to c3.
6. For right move - You used your rook effectively to gain the queen.
Good strategy
7. For wrong move - You could have sacrificed the rook to pin the queen.
Do not stop trying

Categories of medium chess puzzle 0120

This medium chess puzzle falls in these categories.

1. [Medium chess puzzles](#)
2. [Sacrifice puzzles in chess](#)
3. [Gain puzzles in chess](#)
4. [Strategy puzzles in chess](#)
5. [Skewer puzzles in chess](#)
6. [Pin puzzles in chess](#)
7. [Rook puzzles in chess](#)

medium chess puzzle 0120 chart



Figure 9: medium chess puzzle 120 chart 1



Figure 10: medium chess puzzle 120 chart 2



Figure 11: medium chess puzzle 120 chart 3



Figure 12: medium chess puzzle 120 chart 4

How to view the solution to medium chess puzzle 0120

To view the [solution to this puzzle](https://gbud.in/g4f4yr2), follow the steps given below

1. Go to the [puzzle page](https://gbud.in/g4f4yr2)
2. Click the solution button (Key as shown [below](https://gbud.in/g4f4yr2)) to view the solution



Figure 13: Click the solution button to view solutions @ <https://gbud.in/g4f4yr2>

How to get help for moves in the medium chess puzzle 0120

To get help or the possible next moves in the puzzle, , follow the steps given below

1. Go to the [puzzle page](#)
2. Click the help button (exclamation mark as shown [below](#)) to get help or suggestion on next possible [move](#)



Figure 14: Click the help button to get help on next move @ <https://gbud.in/g4f4yr2>



Figure 15: [Solve more medium puzzles @ https://gbud.in/chsmdpz](https://gbud.in/chsmdpz)



Figure 16: [Solve other puzzles @ https://gbud.in/chsgppz](https://gbud.in/chsgppz)

Play chess for free

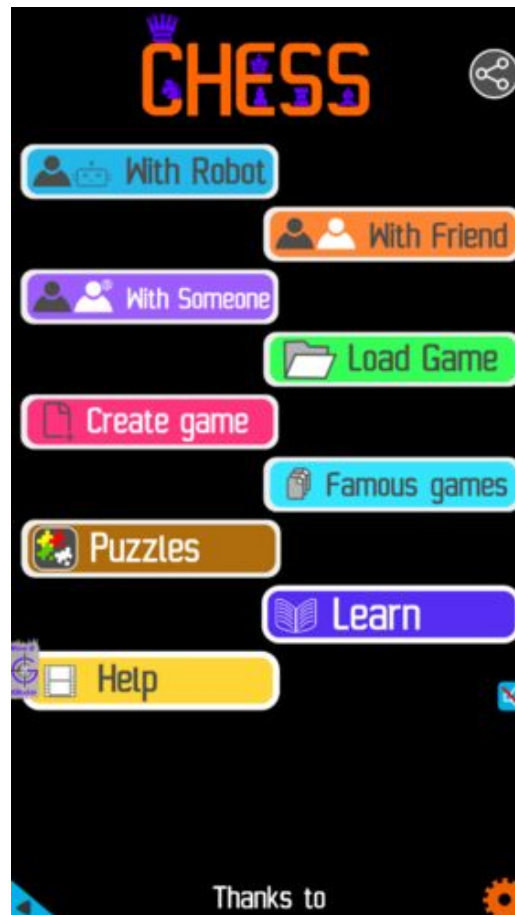


Figure 17: Play chess online for free. Solve puzzles and play with friends

Play chess for free at <https://gbud.in/chs>

We present you a platform to play chess online with friends for free. No need to install any app. You can play chess for free without registration or login.

Simple. You can do several chess related activities.

1. [solve chess puzzles](#)
2. [learn about chess](#)
3. [play chess with computer](#)
4. [play chess with friend](#)
5. [create your own chess games](#)

6. [fen viewer](#)
7. [fen editor](#)
8. [fen generator](#)
9. [pgn viewer](#)
10. [chess board editor](#)
11. [view famous chess games.](#)



Figure 18: Solve this puzzle online by scanning this QR code or go to the link below

<https://gbud.in/g4f4yr2>

Read the latest article on Medium Chess puzzle # 0120 - Gain opponent's queen by scanning this QR code or click the link

Previous article : « [Medium Chess puzzle # 0119 - Mate in 3 moves](#)

Next article : [Medium chess puzzles](#) »

[Back to top](#)

[Contact Us](#)